

Geomet

Universal CMM Software

Gage R&R Installation Instructions

Version 1.x Release



CMMs
Made in USA
Since 1973



Niagara Falls
New York
www.hemel.com

Technical Support for installations can be found on the Geomet Web Site at:

<http://www.geomet-cmm-software.com/knowledg.htm>

Hemel Engineering Products, Inc.

6520 Lockport Road

Niagara Falls, NY 14305

(716) 297-8644 • (716) 297-9405 fax

www.hemel.com • www.geomet-cmm-software.com

Welcome to the Geomet Gage R&R Installation Guide

Geomet Gage R&R provides a self-installation program that handles the installation, upgrade and repair tools for your system.

Un-Install Previous Versions

To upgrade your current Geomet Gage R&R installation always start by un-installing all existing Geomet Gage R&R programs. To accomplish this, go to your Control Panel tools provided in Windows. In figure 1, we show an example of the Control Panel on a Windows XP system.

Windows XP Control Panel

Locate the program Add or Remove Programs and start the application by double clicking. A listing of all programs installed for which Windows has un-install options will be listed. Locate the Gage R-R listing, see figure 2, and select the <Remove> button.

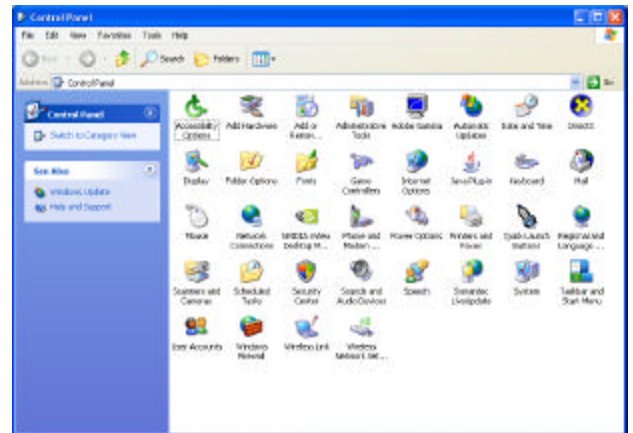


figure 1, Windows XP Control Panel

You will be asked to confirm that Geomet Gage R&R should be removed. Answer by accepting <Yes> and Geomet Gage R&R and all associated program files will be removed.

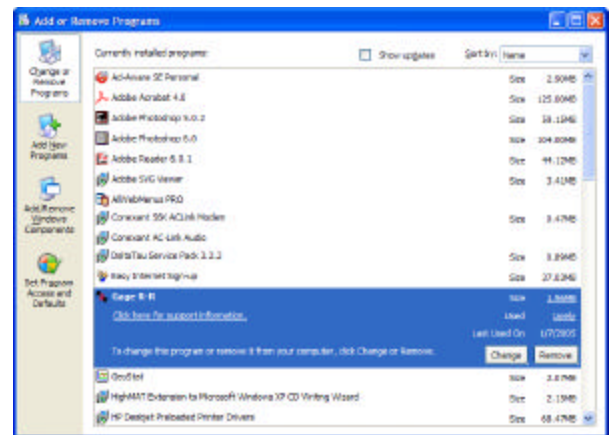
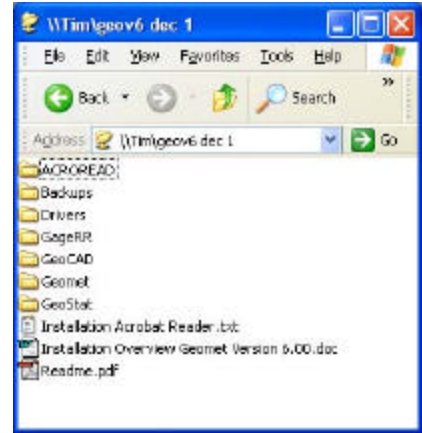


figure 2, Select Gage R-R for Change / Remove

Installing Geomet Gage R&R.

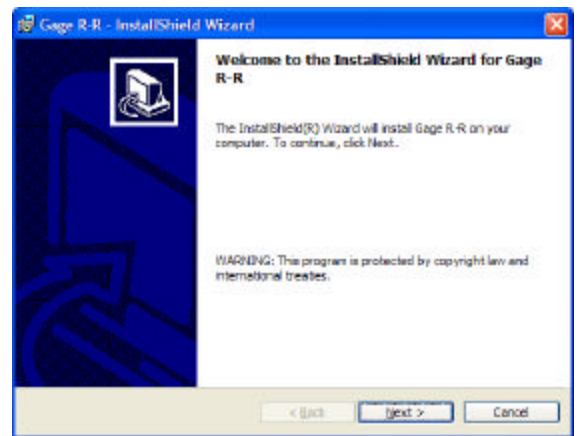
To install Geomet Gage R&R, place the CD in your system's drive. This CD does not contain an auto run option and you should open and view the contents of the CD with Windows Explorer or similar method. On the root directory, there are several folders and text files.

To start the Geomet Gage R&R installation, open the folder GageRR and double click on the file setup.exe. The setup routine will launch and guide you through the steps required.



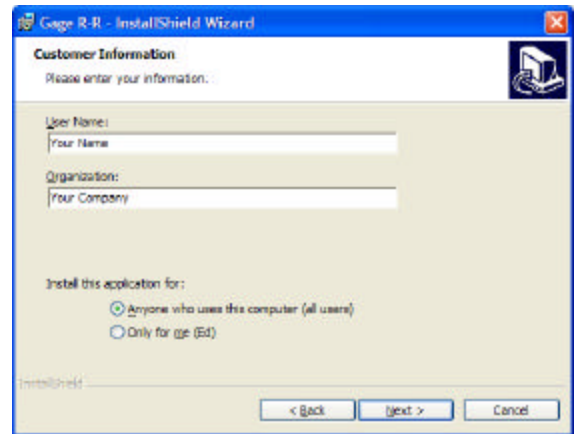
Step 1 - Welcome to the Installer

This first step is the welcome screen for the installer, press <Next> to proceed.



Step 2 - Customer Information

Update with your name and company.



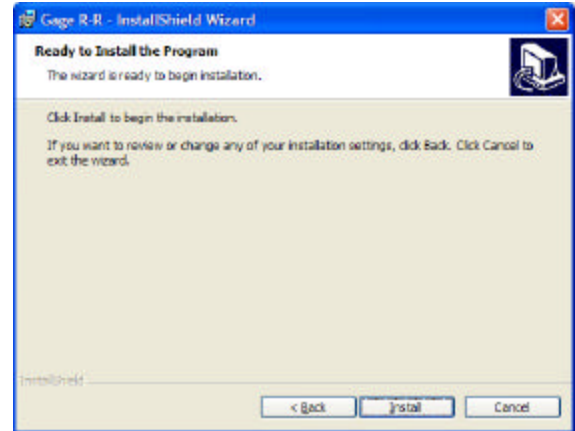
Step 3 - Confirm and Proceed

Press:

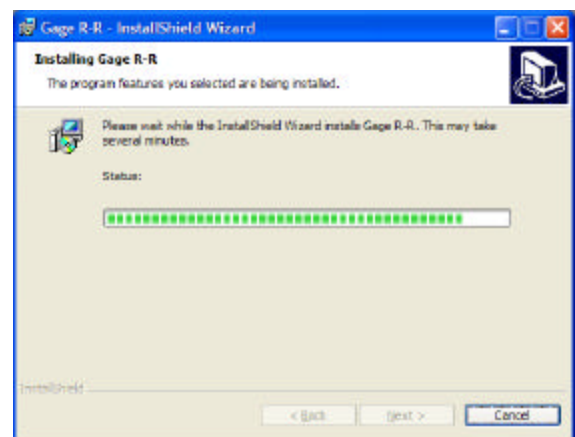
<Install> to proceed with the installation.

<Back> for previous screen.

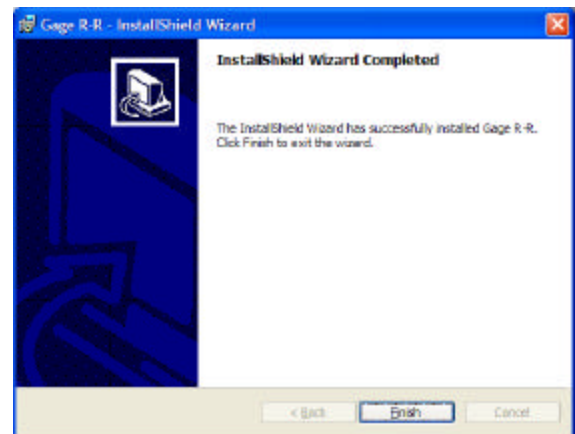
<Cancel> to abort.



Step 4 - Installation Progress



Step 5 - Installation Complete



Once completed, the installer will notify you of the success of the installation process. Should any errors occur, you will be notified. The most common error noted has been leaving Geomet Gage R&R active while attempting to install. This will cause an error and the installation process will fail. Please ensure all programs are closed before performing the installation.

Geomet on the Web

Before you start using your Geomet System, we ask that you take a few minutes to review the dedicated Geomet web site which can be found at:

www.geomet-cmm-software.com

The Geomet web site is dedicated to supporting your needs by providing the latest help pages, upgrades and news.

All help topics can be found by accessing the KnowledgeBase pages. Within these pages you will find help on many topics and features found in Geomet. Use the Search page to locate all pages that provide support for a specific topic.

Through the Geomet web site you can keep current with the latest changes to Geomet. We are publishing updates to Geomet up to 4 times per month. Upgrading Geomet is available to all new system sales based on the following schedule:

- Geomet 301 1 Year
- Geomet 101 1 Year
- Geomet Junior 90 Days

Upgrades are free to all Software Service Contract holders or available for purchase.

We suggest that the CMM be placed on line and have access to the Internet. Through Geomet, there exists a direct link to the help pages located on the web site. For example, if you are measuring a circle, press the WebHelp key (minus on the upper row of the keyboard) and Geomet will connect to the KnowledgeBase and display help for the circle.

In the Help menu, you will find direct-to-web access for several help topics. These range from support features such as submitting suggestions to sharing ideas through the use of the Geomet Forum.

